

Zusammenspiel von Building smart Data Dictionary (BSDD) und digitalem Produktpass (DPP)

Grundlagen für Nachhaltigkeitsbewertungen in BIM

Hansueli Schmid

Hansueli Schmid | Lignum – Holzwirtschaft Schweiz

DPP & BSDD

Swissbau Focus
18. Januar 2024 12:30 -13:30h



Lignum
Economia
svizzera
del legno

**SWISS
BAU**

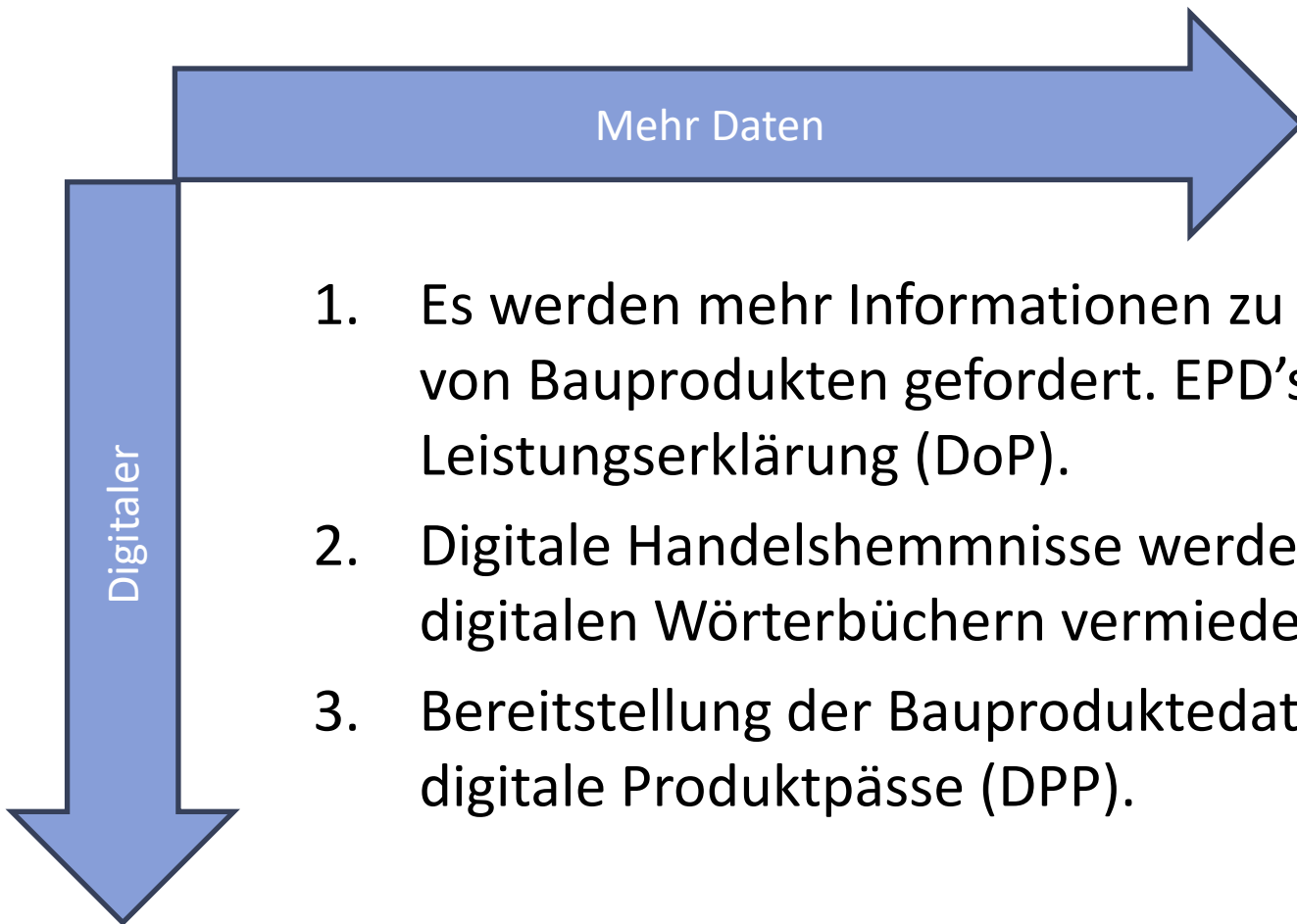
Wie wirkt sich der EU Green Deal auf die Branche aus?



(Interactive map)



Hauptentwicklung in der europäischen Bauprodukteverordnung (CPR)

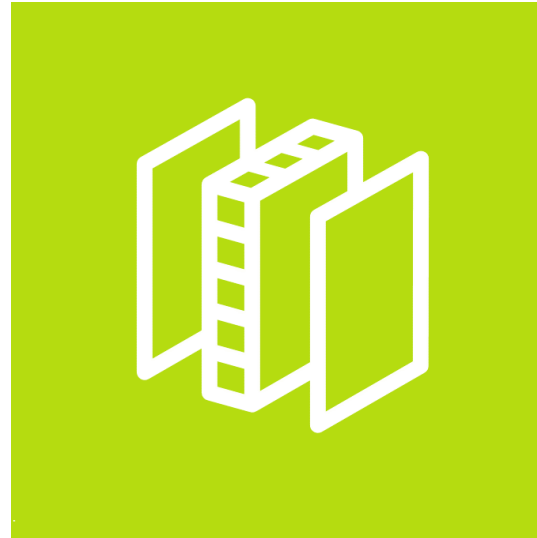


1. Es werden mehr Informationen zu den Umweltauswirkungen von Bauprodukten gefordert. EPD's werden Teil der Leistungserklärung (DoP).
2. Digitale Handelshemmnisse werden mittels gemeinsamen, digitalen Wörterbüchern vermieden.
3. Bereitstellung der Bauproduktedaten von Herstellern über digitale Produktpässe (DPP).

Product Domain



BAUEN DIGITAL SCHWEIZ
BÂTIR DIGITAL SUISSE
COSTRUZIONE DIGITALE SVIZZERA
CONSTRUIR DIGITAL SVIZRA



Home of



**SWISS
BAU**

Whitepaper: Digital vernetzte Bauproduktedaten



Leitung



BAUEN DIGITAL SCHWEIZ
BÂTIR DIGITAL SUISSE
COSTRUZIONE DIGITALE SVIZZERA
CONSTRUIR DIGITAL SVIZRA

Thomas Glättli

Home of



Projektteam



Daniel Küchler



Louis Werthmüller
Elvis Owusu



Uwe Rüdel



Marc Fasnacht



Hansueli Schmid



Maximilian Vomhof

Mit freundlicher Unterstützung von



Adrian Wildenauer



Marloes Fischer
Kira Kulik



Manuel Frey



René Sigg



Johannes Pitterle



David Gerner
Stefan Reiser

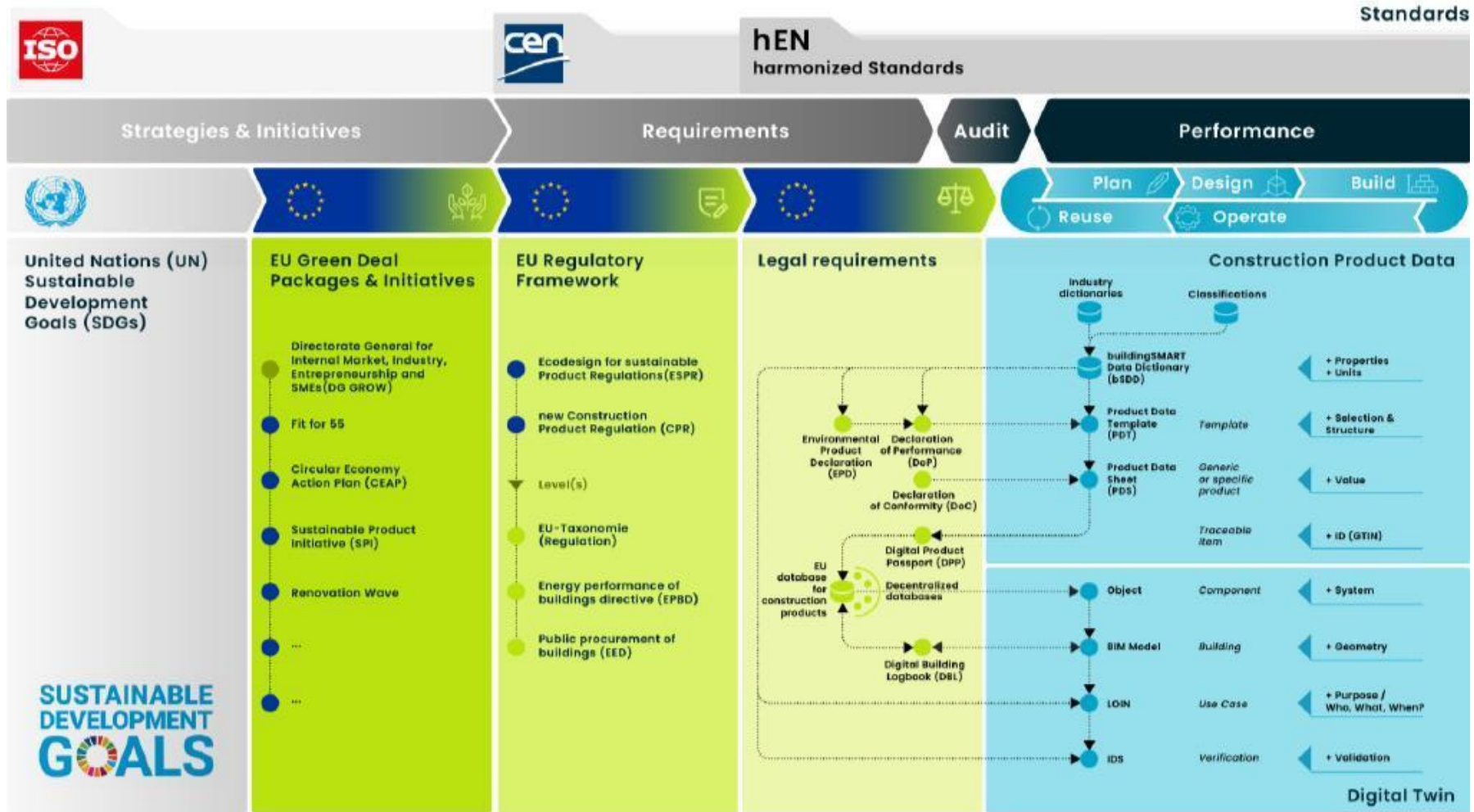


Birgitta Schock



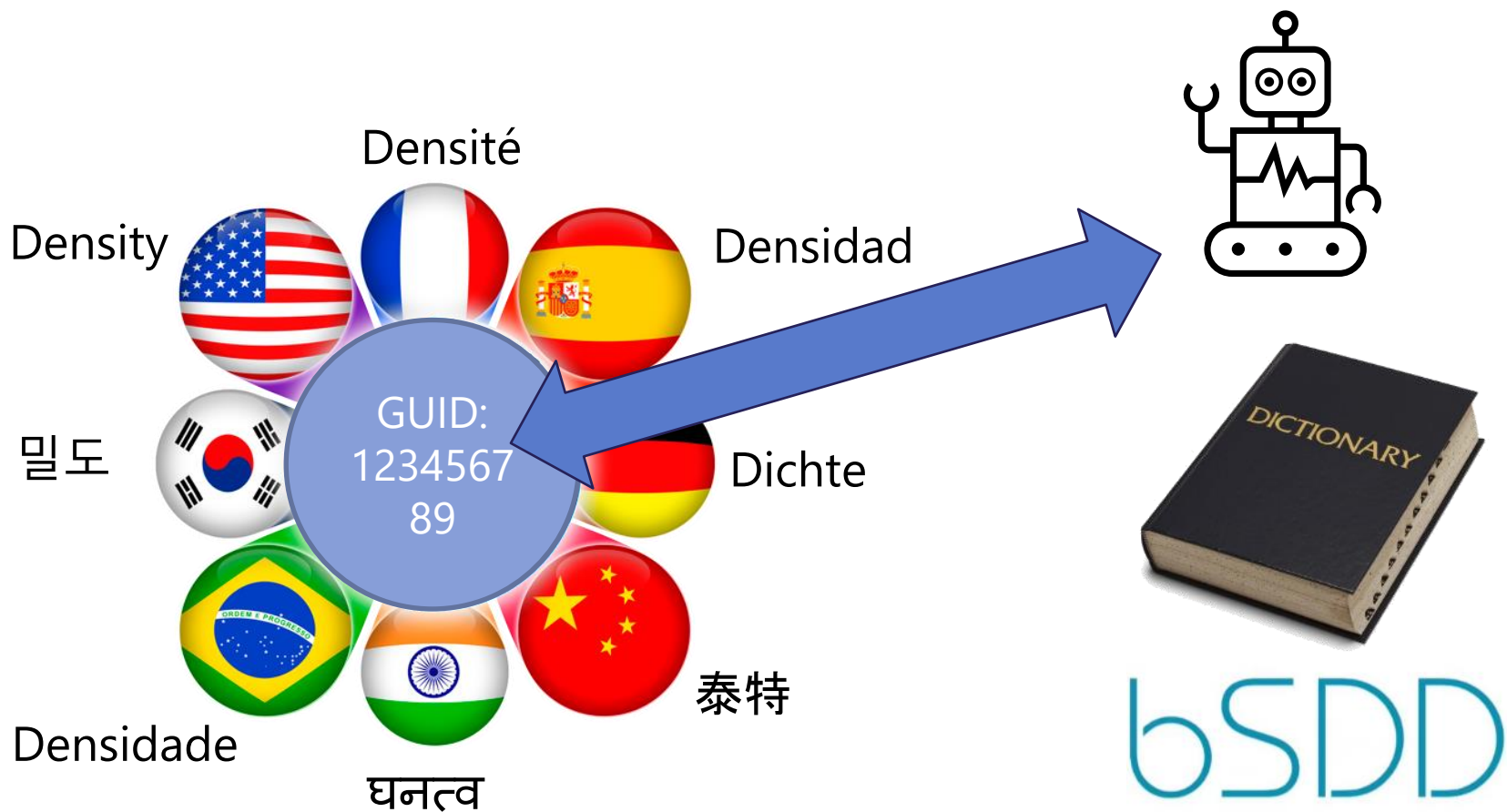
Werner Fehlmann
Christian Frey

Übersicht



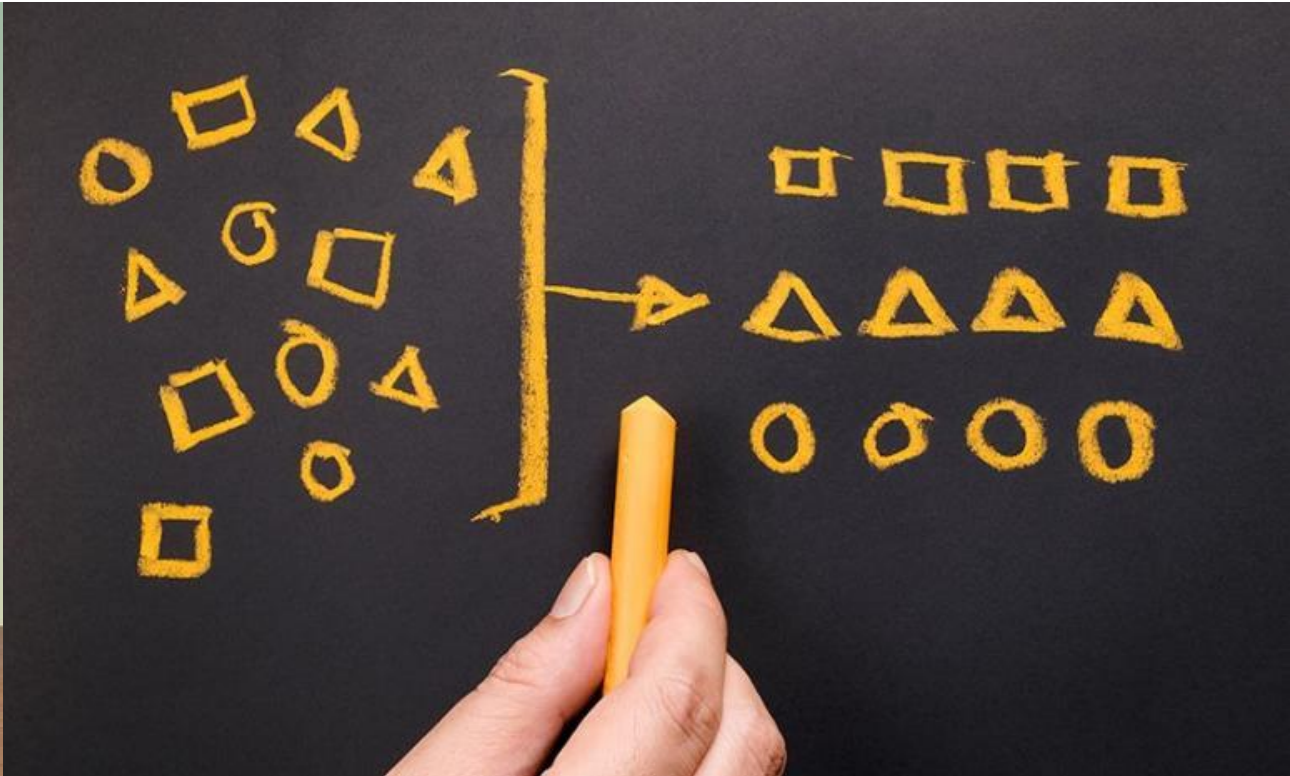
Babylonisches Sprachgewirr





Building smart Data Dictionary (BSDD)

Daten maschinenlesbar machen



Ontologie im BSDD



LCA indicators and modules 3.0

Name	LCA indicators and modules
Version	3.0
Status	Preview
Release date	2023-12-01
More info	https://www.lignum.ch/leistungen/projekte/buildingsmart-data-dictionary-bsdd/
DefaultLanguageCode	EN
QualityAssuranceProcedure	EN ISO 23386:2020

Classes

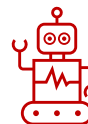
Code	Name
Acidification	Acidification
Biogeniccarboncontentatthefactorygate	Biogenic carbon content at the factory gate
Eco-toxicity	Eco-toxicity
Environmentalinformationdescribingoutputflows	Environmental information describing output flows
Eutrophication	Eutrophication
GeneralInformation	General Information
GlobalWarmingPotential	Global Warming Potential
Humanhealth	Human health
Inventoryindicatorsdescribingresourceuse	Inventory indicators describing resource use
Landuserelatedimpacts	Land use related impacts
OzoneDepletion	Ozone Depletion
OzoneFormation	Ozone Formation
Resourcedepletion	Resource depletion
Resourceuse	Resource use
Scenarios	Scenarios
Wastecategories	Waste categories



Class

Global Warming Potential English

Code	GlobalWarmingPotential
Class type	Class
URI	https://identifier.buildingsmart.org/uri/LCA/LCA/3.0/class/GlobalWarmingPotential
Dictionary	LCA indicators and modules
Dictionary version	3.0
Dictionary release date	2023-12-01
Dictionary state	Preview
More info	https://www.lignum.ch/leistungen/projekte/buildingsmart-data-dictionary-bsdd/
Dictionary quality assurance procedure	EN ISO 23386:2020
Owner	buildingSMART Sustainability Strategic Group
DocumentReference	EN 15804:2012+A2:2019
RevisionNumber	1
Status	Active
VersionDateUtc	2023-12-01
VersionNumber	1
Uid	90a9cce5-f3fc-450c-92cd-50430fb0eb9
Related IFC entity	IfcBuilding



Class properties

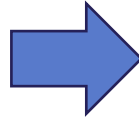
Property set: [GlobalWarmingPotential](#)

global warming potential - biogenic	covers carbon emissions to air (CO ₂ , CO and CH ₄) originating from the oxidation and/or reduction of aboveground biomass by means of its transformation or degradation (e.g. combustion, digestion, composting, landfilling) and CO ₂ uptake from the atmosphere through photosynthesis during biomass growth – i.e. corresponding to the carbon content of products, biofuels or above ground plant residues such as litter and dead wood
global warming potential - fossil fuels	it covers greenhouse gas (GHG) emissions to any media originating from the oxidation and/or reduction of fossil fuels by means of their transformation or degradation (e.g. combustion, digestion, landfilling, etc.)
global warming potential - land use and land use change	factor describing the potential radiative forcing impact of carbon uptakes and emissions (CO ₂ , CO and CH ₄) originating from carbon stock changes caused by land use change and land use over a given period of time
global warming potential - total	it accounts for the total global warming potential arising from fossil, biogenic and land use and land use change emissions

Templates and digital data sheets (Product passport)

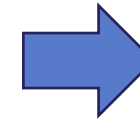
Daten Template

+ Properties



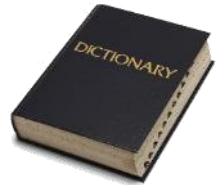
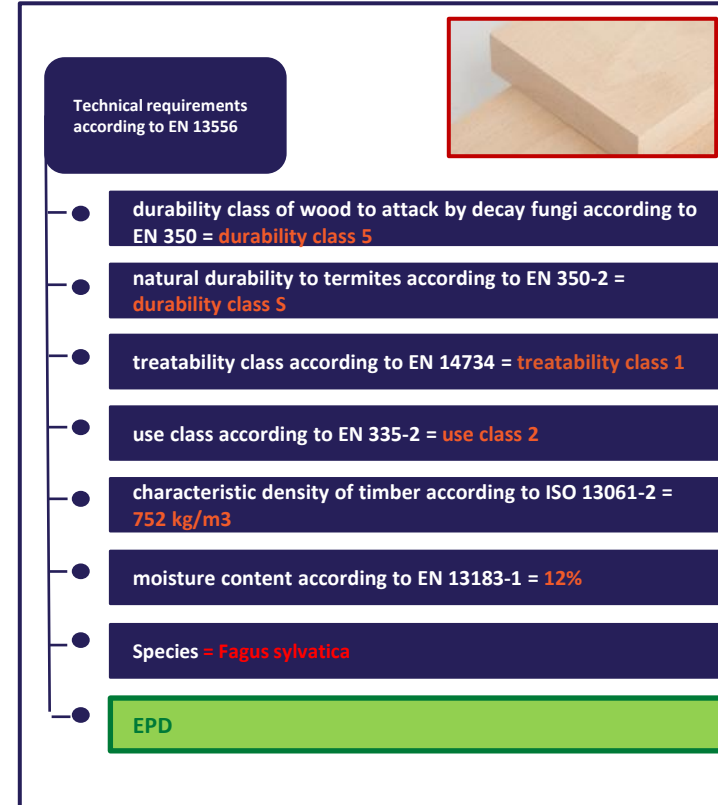
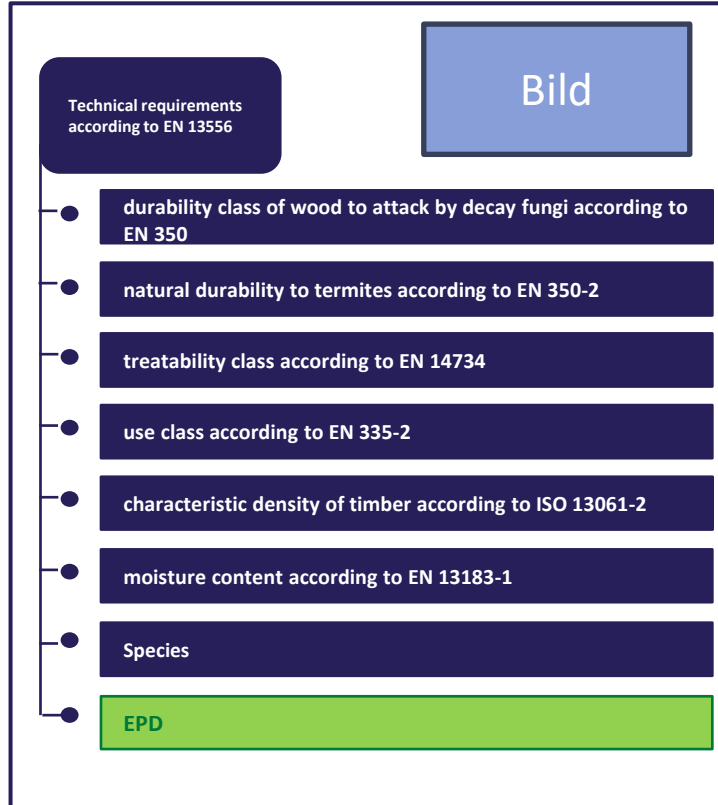
Digitales
Datenblatt

+ Values



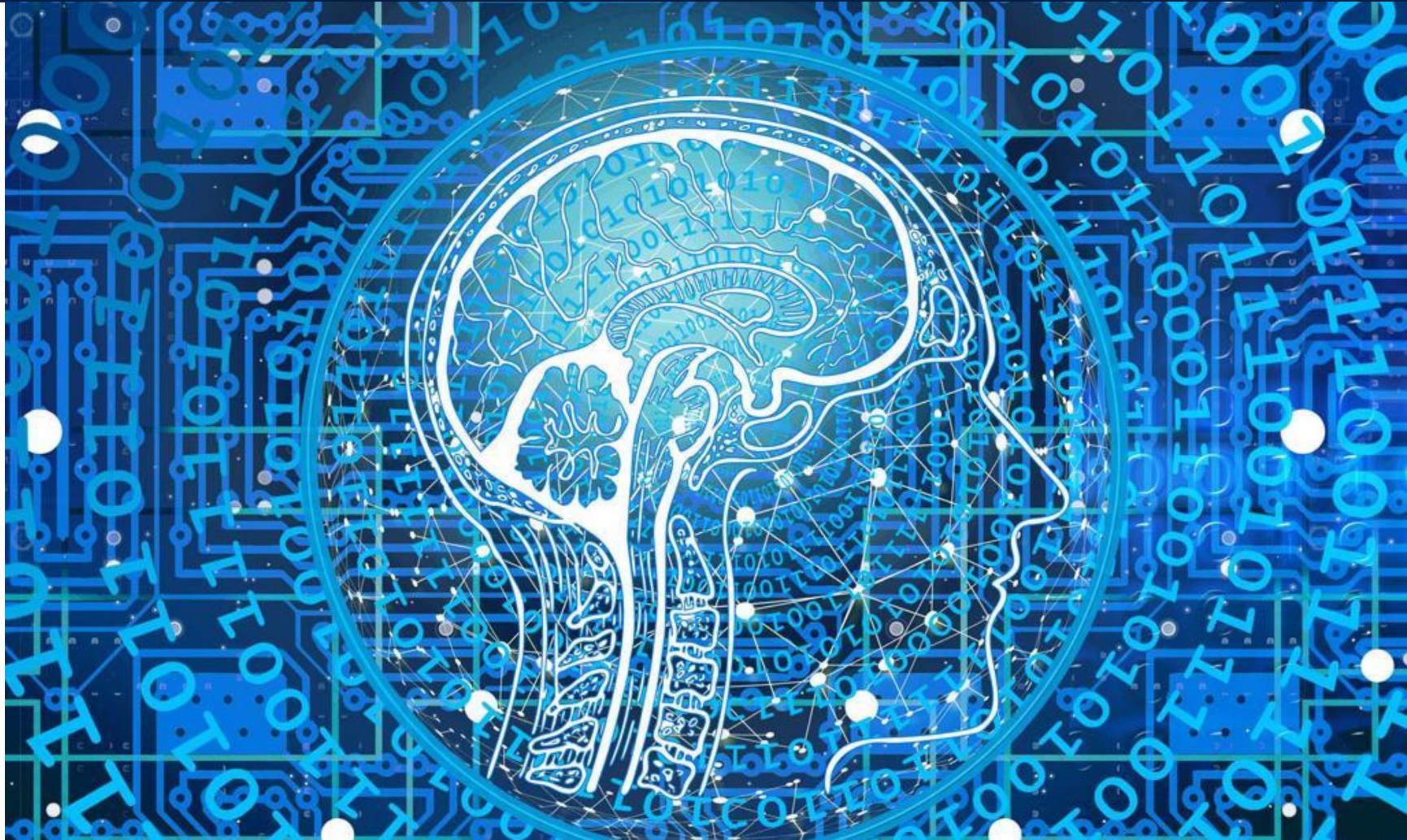
Digitaler
Produkte
Pass

+ ID

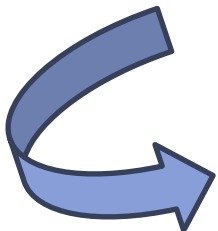


bSDD

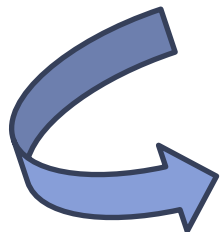
Ontologie – Begriffe in Bezug zueinander bringen



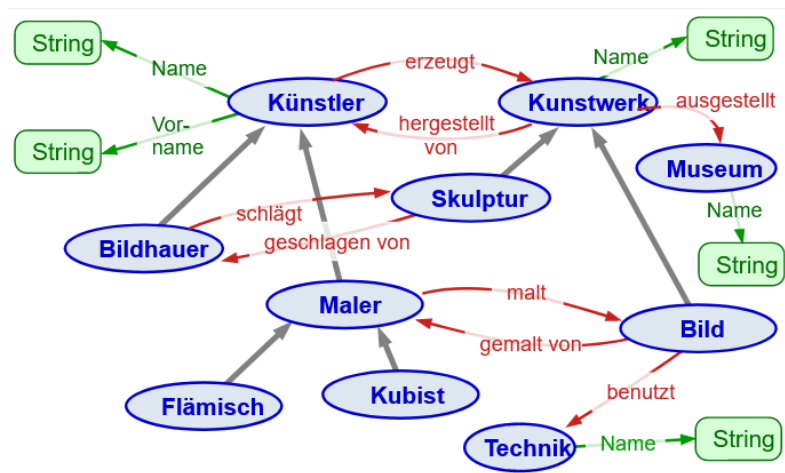
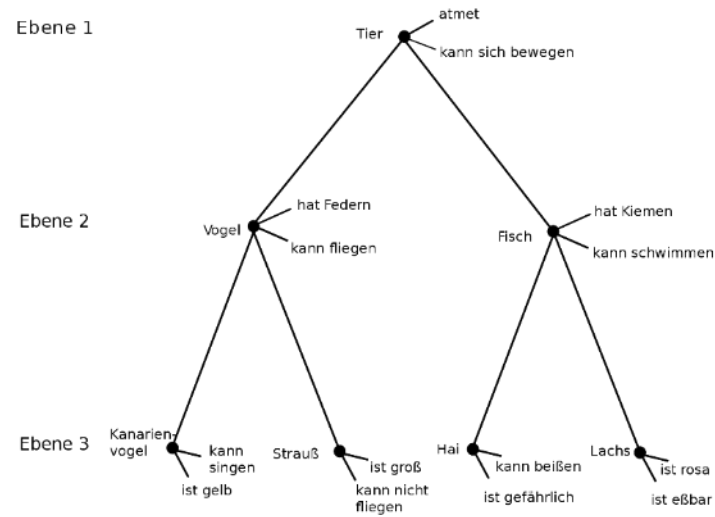
Wörterbuch



Semantisches Netz



Ontologie



Danke für Ihr Interesse



Lignum
Holzwirtschaft
Schweiz

Hansueli Schmid
Lignum - Holzwirtschaft Schweiz
Mühlebachstrasse 8
8008 Zürich
Switzerland

Tel.: +41 44 267 47 85
eMail: hansueli.schmid@lignum.ch